





VYNMSA GUANAJUATO
PUERTO INTERIOR II - SPEC C


INVENTORY BUILDING
& BTS FOR LEASE

SPEC C - VGPI II BUILDING INFORMATION

 **LAND AREA**
9,575 m²
103,064 Sq.Ft.


 **FLOOR THICKNESS**
6 inches / 15 cm

 **CLEAR HEIGHT**
9.14 m
30'

 **BUILDING AREA**
5,041 m²
54,258 Sq.Ft.


 **BUILDING STRUCTURE**
Steel Rigid Frame

 **DOCKS**
3 + 2 Docks

 **LAND EXPANSION AREA**
13,464 m²
144,925 Sq.Ft.

 **WALL MATERIAL**
Pre-Cast Concrete


 **RAMPS**
1 Concrete Ramp

 **BUILDING EXPANSION AREA**
8,568 m²
92,225 Sq.Ft.

 **ROOF MATERIAL**
Standing Seam Roof

 **PARKING LOT**
50 Spaces

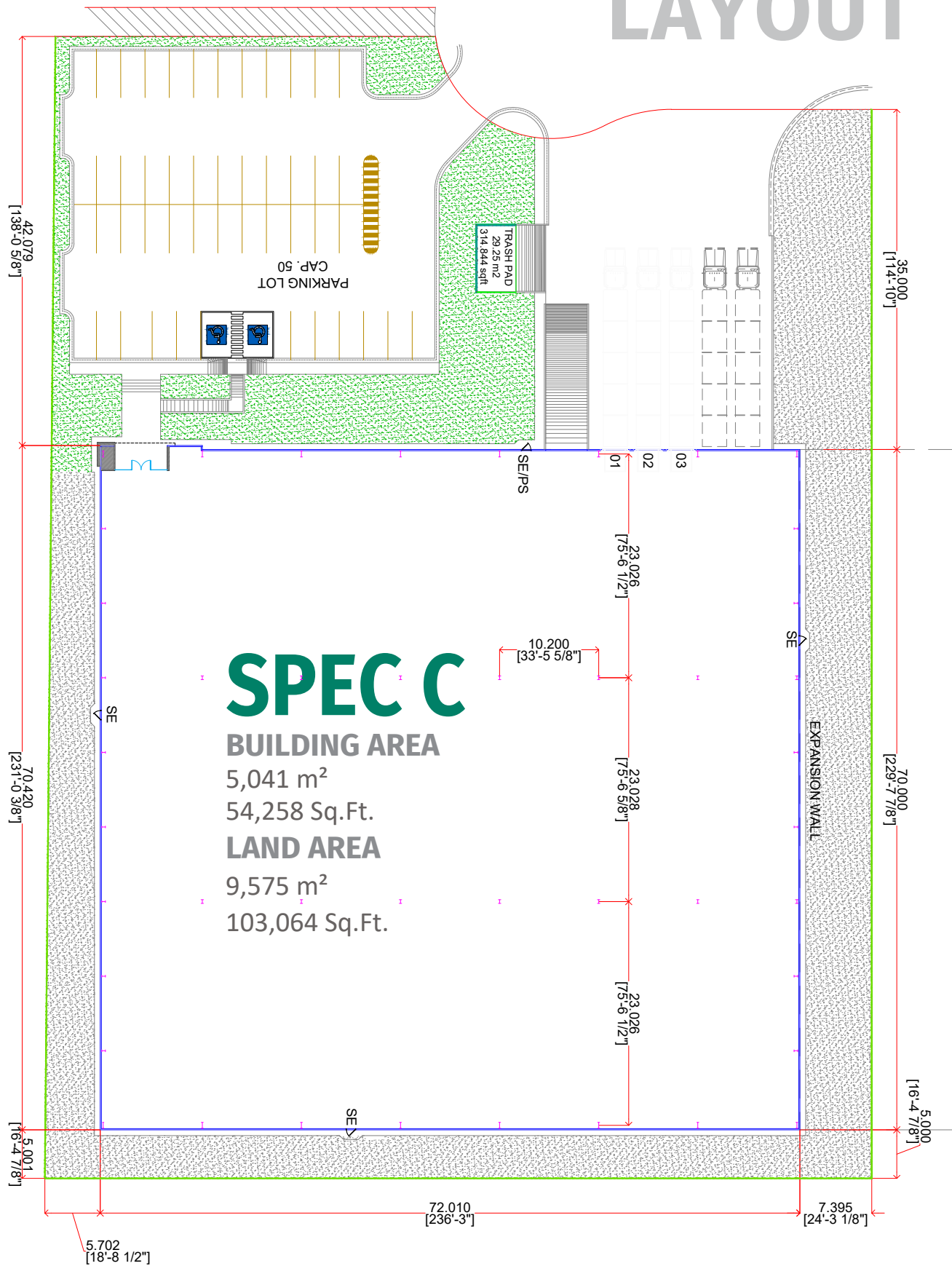
 **BAY SIZE**
10.20 m x 23.02m
33' - 5 5/8" x 75' - 6 5/8"

 **SUBSTATION**
According to client needs

 **SKYLIGHTS**
4% Approx.



SPEC C - VGPI II BUILDING LAYOUT



PARK GENERAL INFORMATION

SILAO, GUANAJUATO



ADVANTAGES

Airport at less than 10 min. Drive

Highways to: Leon, Guanajuato, Queretaro, Mexico City, Monterrey, 45 Highway & NAFTA Highway.

24/7 Controlled Access: Fenced and Gated.

Use: Manufacturing, Assembly & Distribution.

Infrastructure: All on site. Best Available.

Labor Force: Abundant. Nearby – Easy Access.



DISTANCE TO

Guanajuato International Airport

10 km = 6.5 miles

Queretaro

160 km = 100 miles

Mexico City

370 km = 230 miles

Saltillo | Ramos Arizpe

610 km = 380 miles

Monterrey

675 km = 420 miles

McAllen, TX | Reynosa City

835 km = 520 miles



PARK INFRASTRUCTURE

Water (Park Network)

Sewer (Park Network)

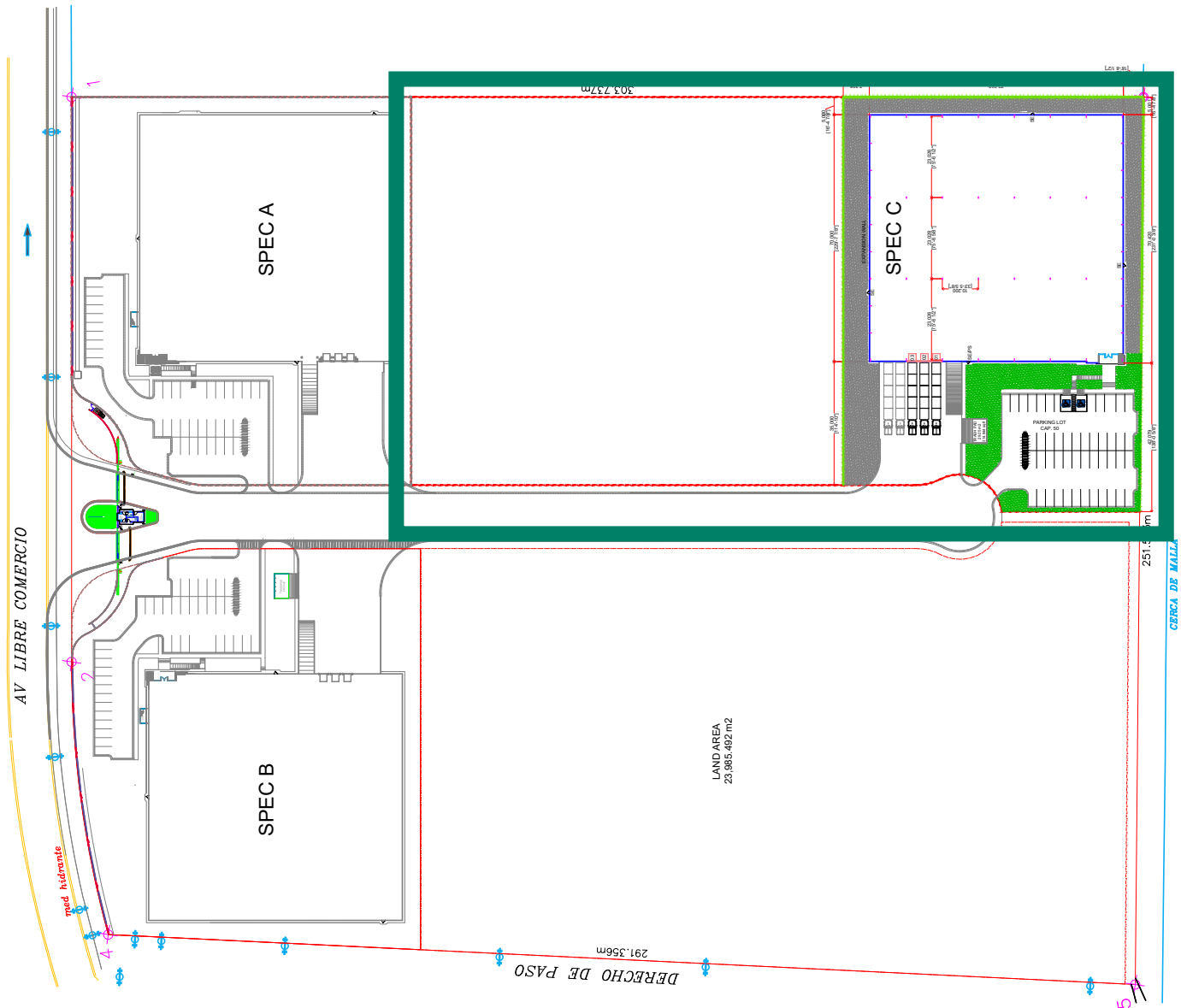
Voice & Data

Energy

CCTV (24/7)

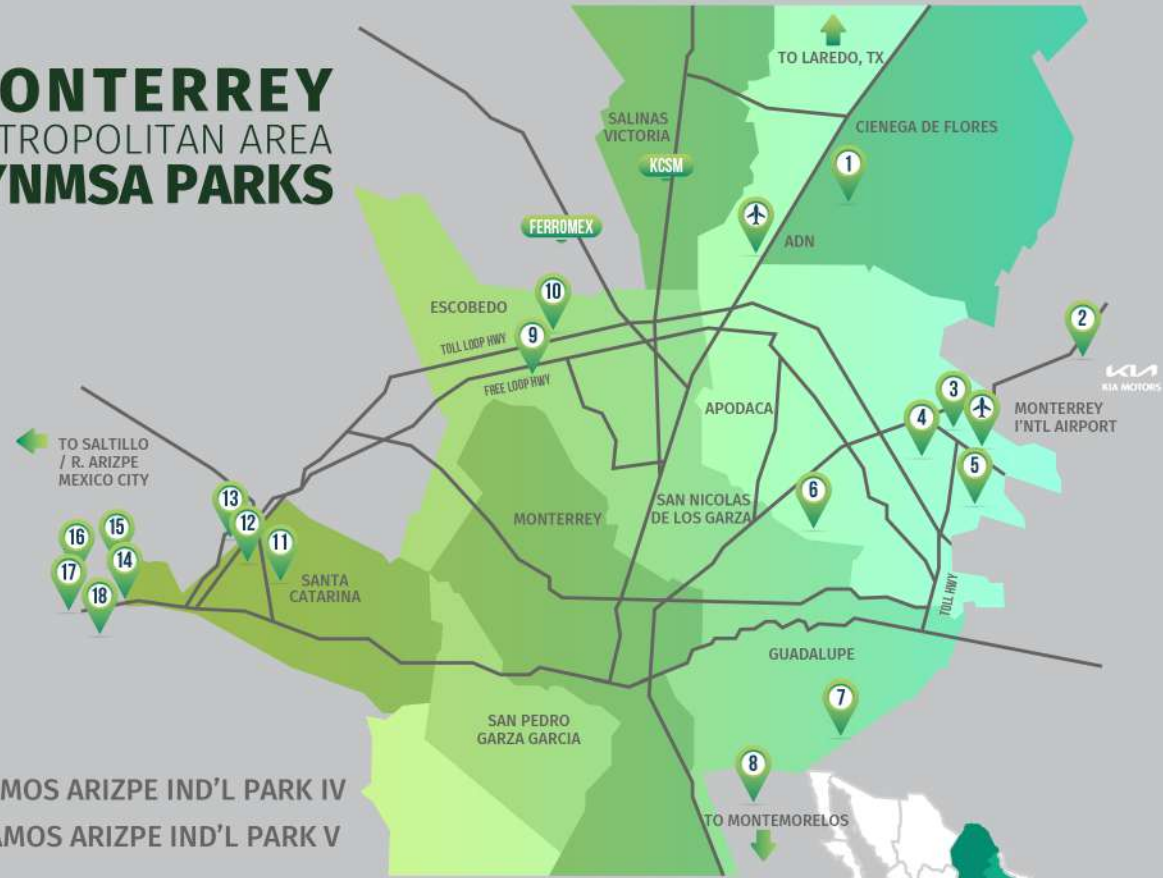
PARK LAYOUT INFORMATION

VYNMSA GUANAJUATO PUERTO INTERIOR II



MONTERREY METROPOLITAN AREA VYNMSA PARKS

- ▶ 1. VYNMSA NORTH INDUSTRIAL PARK
- ▶ 2. AIRPORT TECHNOLOGY PARK
- ▶ 3. OMA VYNMSA AERO INDUSTRIAL PARK
- ▶ 4. VYNMSA AEROPUERTO APODACA IND'L PARK
- ▶ 5. VYNMSA APODACA INDUSTRIAL PARK PHASE I & II
- ▶ 6. VYNMSA MIGUEL ALEMAN IND'L PARK
- ▶ 7. ACUEDUCTO INDUSTRIAL PARK
- ▶ 8. VYNMSA MONTEMORELOS INDUSTRIAL PARK
(APPROX. 45 MIN DRIVE FROM MONTERREY TO VMIP)
- ▶ 9. VYNMSA ESCOBEDO PARK
- ▶ 10. VYNMSA ESCOBEDO PARK II
- ▶ 11. VYNMSA SANTA CATARINA IND'L PARK
- ▶ 12. VYNMSA SANTA CATARINA IND'L PARK II
- ▶ 13. VYNMSA METROPOLITAN IND'L PARK
- ▶ 14. VYNMSA RAMOS ARIZPE IND'L PARK
(APPROX. 40 MIN DRIVE FROM MTY TO RAMOS ARIZPE)
- ▶ 15. VYNMSA RAMOS ARIZPE IND'L PARK II
- ▶ 16. VYNMSA RAMOS ARIZPE IND'L PARK III
- ▶ 17. VYNMSA RAMOS ARIZPE IND'L PARK IV
- ▶ 18. VYNMSA RAMOS ARIZPE IND'L PARK V



BAJIO AREA VYNMSA PARKS

- ▶ 1. VYNMSA LEON INDUSTRIAL PARK
- ▶ 2. VYNMSA GUANAJUATO PUERTO INTERIOR I
- ▶ 3. VYNMSA GUANAJUATO PUERTO INTERIOR II
- ▶ 4. VYNMSA GUANAJUATO INDUSTRIAL PARK
- ▶ 5. VYNMSA CELAYA INDUSTRIAL PARK
- ▶ 6. VYNMSA APASEO INDUSTRIAL PARK
- ▶ 7. VYNMSA QUERETARO INDUSTRIAL PARK
- ▶ 8. PARQUE INDUSTRIAL QUERETARO PHASE 4
- ▶ 9. VYNMSA SAN LUIS INDUSTRIAL PARK (LOGISTIK II)

AUTOMOTIVE CORRIDOR HWY NAFTA HIGHWAY

CONTACT US: C. +52 (442) 281 - 3356 - INFO@VYNMSA.COM - VYNMSA.COM