

VYNMSA



BUILDING GROWTH TOGETHER



VYNMSA ESCOBEDO PARK I SPEC V

Inventory Building &
BTS for Lease

SPEC V - VEP I

BUILDING INFORMATION



LAND AREA

26,013 m²
280,002 ft²



FLOOR THICKNESS

6 Inches
15 cm



DOCKS

8 + 2 Docks



BUILDING AREA

12,988 m²
139,806 ft²



BUILDING STRUCTURE

Steel Rigid frame



RAMPS

1 Concrete Ramp



BAY SIZE

10.20 m x 22.89 m
33' - 6" x 75' - 1"



WALL MATERIAL

Precast Concrete



PARKING LOT

93 Spaces



CLEAR HEIGHT

9.33 m | 30' - 7'



ROOF MATERIAL

Standing Seam Roof



SKYLIGHTS

4% Approx.



GUARD HOUSE

9.90 m²
106.56 ft²



SUBSTATION

1,600 KVA's



FIRE SYSTEM

Basic fire
protection system



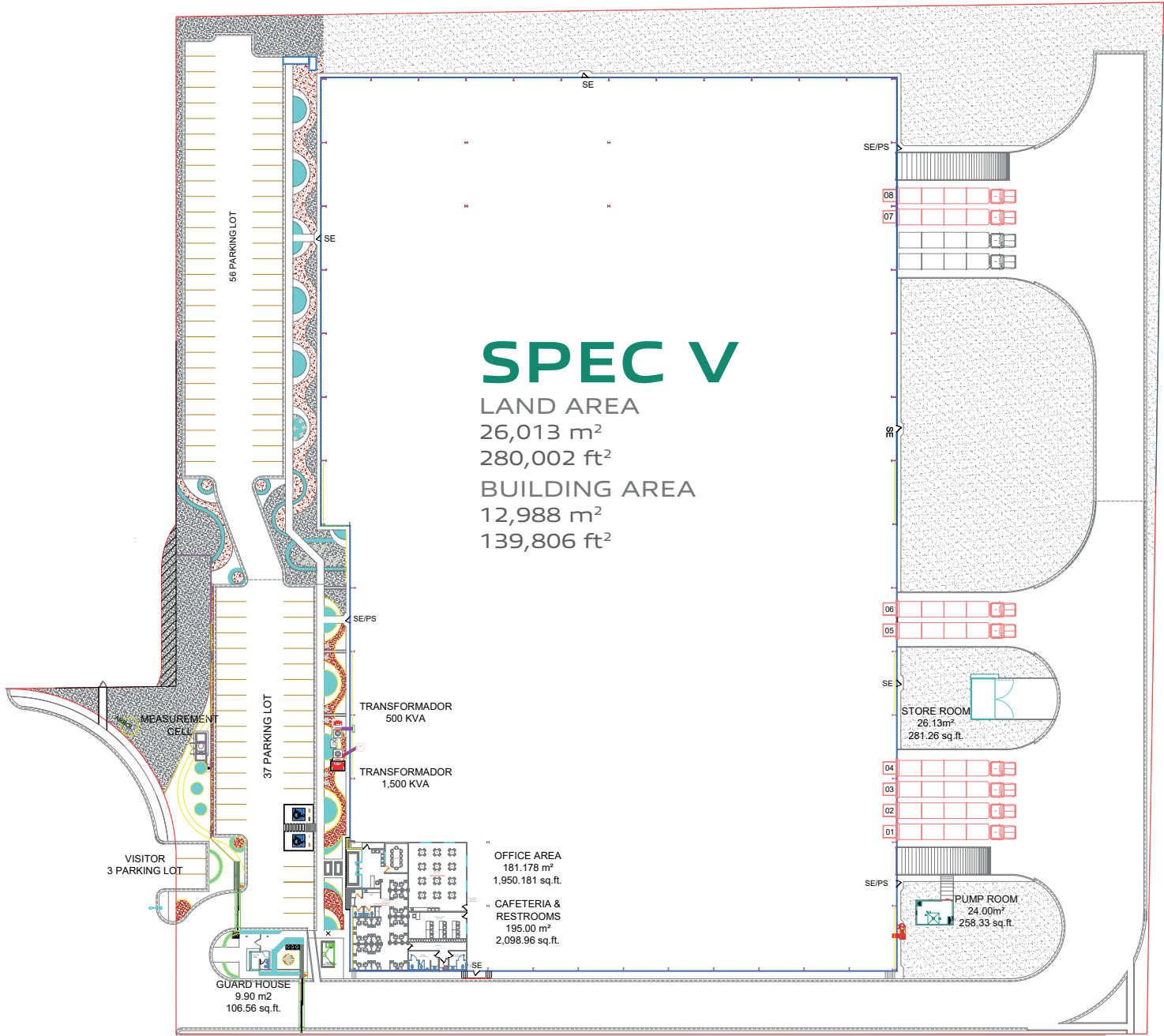
OFFICE AREA

181 m²
1,950 ft²



SPEC V - VEP I

BUILDING LAYOUT



PARK GENERAL INFORMATION

ESCOBEDO, N.L.

ADVANTAGES:

Airport at less than 30 min drive Highways to: Airport, Monterrey, Saltillo – Monclova, Reynosa – McAllen, Laredo TX & Mexico City.

24/7 Controlled access:

Fenced and Gated

Use: Manufacturing, Assembly & Distribution.

Transportation: Public.

Infrastructure: All On Site. Best Available.

Labor Force: Nearby - Easy Access.

DISTANCE TO:

Monterrey International Airport

25 km = 16 miles

Laredo, Texas

217 km = 135 miles

Monterrey Downtown

20 km = 13 miles

Saltillo | Ramos Arizpe

90 km = 56 miles

McAllen TX | Reynosa City

250 km = 155 miles

Mexico City

910 km = 565 miles

PARK INFRASTRUCTURE:

Water (Park Network)

Sewer (Park Network)

Data & Voice (Alestra)

Energy (CFE)

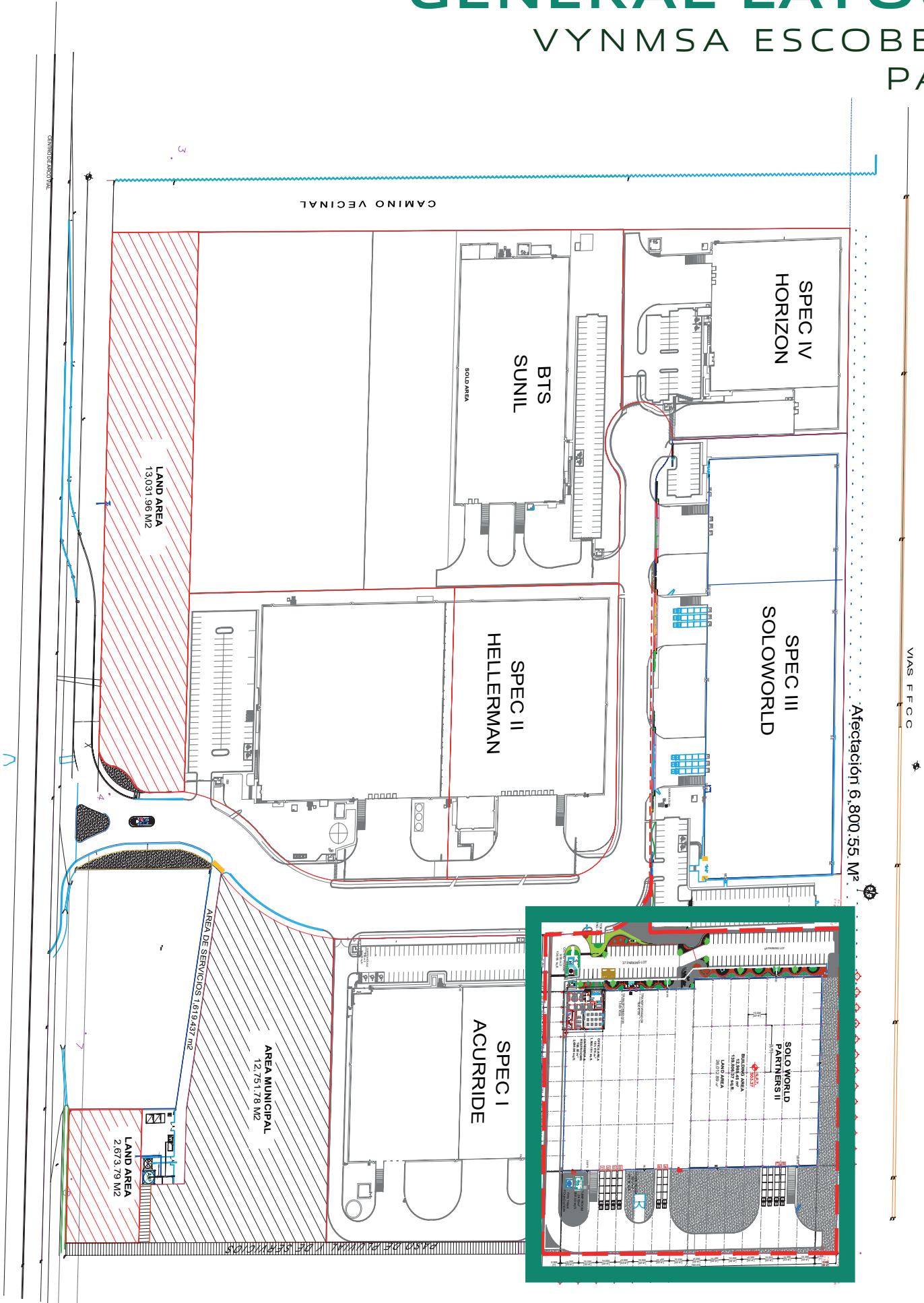
Gas (CIA Mexicana de Gas)

CCTV 24/7



GENERAL LAYOUT

VYNMSA ESCOBEDO PARK



Afectación 6,800.55 M²

VAS F.C.C.

CANAL DE PASADIZO

CAMINO VECINAL

LAND AREA
13,031.96 M²

LAND AREA
2,673.79 M²

AREA MUNICIPAL
12,751.78 M²

AREA DE SERVICIOS
1,619.437 M²

BTS
SUNIL
SOLD AREA

SPEC II
HELLERMAN

SPEC III
SOLOWORLD

SPEC IV
HORIZON

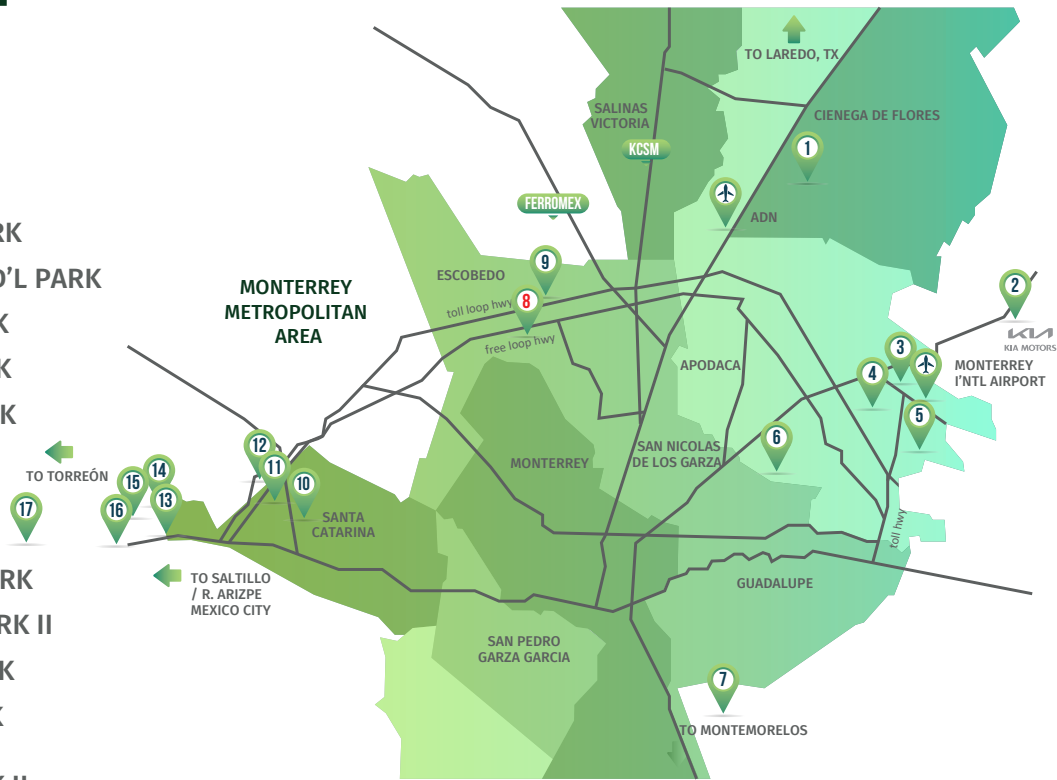
SPEC I
ACURRIDE

SOLO WORLD
PARTNERS II

NORTHEAST

VYNMSA PARKS

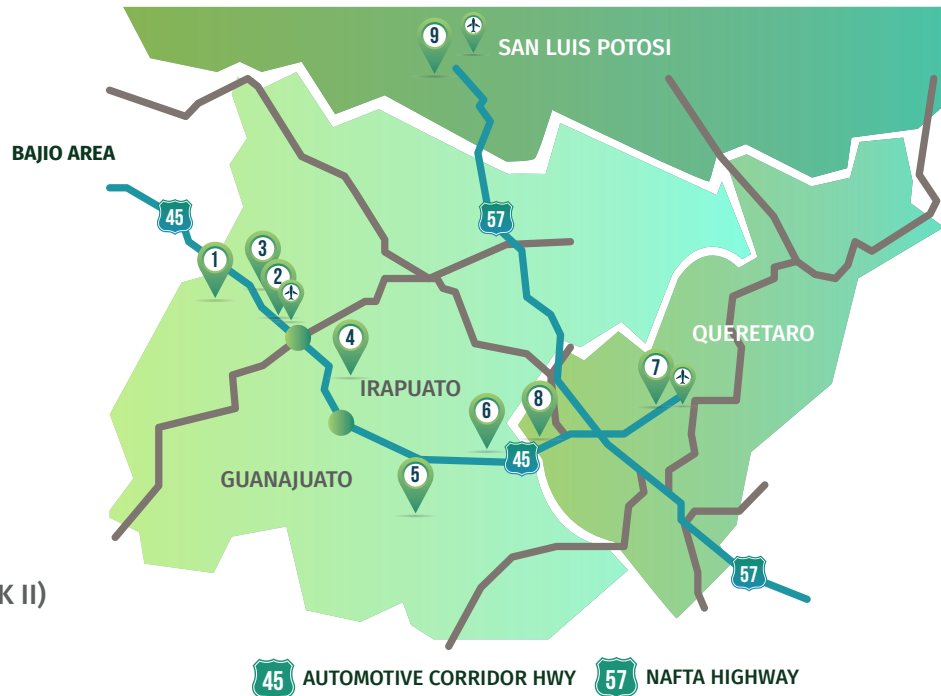
- ▶ 1. VYNMSA NORTH INDUSTRIAL PARK
- ▶ 2. AIRPORT TECHNOLOGY PARK
- ▶ 3. OMA VYNMSA AERO INDUSTRIAL PARK
- ▶ 4. VYNMSA AEROPUERTO APODACA IND'L PARK
- ▶ 5. VYNMSA APODACA INDUSTRIAL PARK
- ▶ 6. VYNMSA MIGUEL ALEMAN IND'L PARK
- ▶ 7. VYNMSA MONTEMORELOS IND'L PARK
(APPROX. 45 MIN DRIVE FROM MONTERREY TO VMIP)
- ▶ 8. VYNMSA ESCOBEDO PARK
- ▶ 9. VYNMSA ESCOBEDO PARK II
- ▶ 10. VYNMSA SANTA CATARINA IND'L PARK
- ▶ 11. VYNMSA SANTA CATARINA IND'L PARK II
- ▶ 12. VYNMSA METROPOLITAN IND'L PARK
- ▶ 13. VYNMSA RAMOS ARIZPE IND'L PARK
(APPROX. 40 MIN DRIVE FROM MTY TO RAMOS ARIZPE)
- ▶ 14. VYNMSA RAMOS ARIZPE IND'L PARK II
- ▶ 15. VYNMSA RAMOS ARIZPE IND'L PARK III
- ▶ 16. VYNMSA RAMOS ARIZPE IND'L PARK IV
- ▶ 17. VYNMSA TORREÓN INDUSTRIAL PARK
(APPROX. 2.50 HR DRIVE FROM RAMOS ARIZPE TO TORREÓN)



BAJIO AREA

VYNMSA PARKS

- ▶ 1. VYNMSA LEON INDUSTRIAL PARK
- ▶ 2. VYNMSA GUANAJUATO PUERTO INTERIOR I
- ▶ 3. VYNMSA GUANAJUATO PUERTO INTERIOR II
- ▶ 4. VYNMSA GUANAJUATO INDUSTRIAL PARK
- ▶ 5. VYNMSA CELAYA INDUSTRIAL PARK
- ▶ 6. VYNMSA APASEO INDUSTRIAL PARK
- ▶ 7. VYNMSA QUERETARO INDUSTRIAL PARK
- ▶ 8. PARQUE INDUSTRIAL QUERETARO PHASE 4
- ▶ 9. VYNMSA SAN LUIS INDUSTRIAL PARK (LOGISTIK II)



45 AUTOMOTIVE CORRIDOR HWY **57** NAFTA HIGHWAY